



Company Bulletin

for EMC, EMP, HEMP & TEMPEST Protection

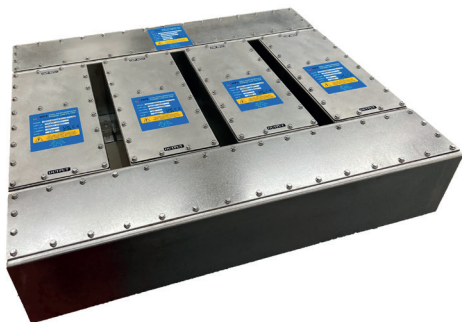
Issue 32



A meeting of the Engineering team at MPE led by John Hughes – Engineering Director



Members of the Engineering team during laboratory testing at MPE



The ground-breaking Mil-Std-188-125-1A HEMP filter which is independently certified and has now been supplied to multiple projects

Expanding the design engineering team

In support of the company's strong and sustained growth and the soaring world demand for its customised filter solutions, over the past 12 months MPE has been expanding its Engineering team. Now comprising a team of six highly qualified engineers representing 10% of MPE's total head count, MPE's capability in design and development has been significantly strengthened.

In line with wider company strategy and following the appointment of John Hughes as Engineering Manager and now Director, three new recruits have come on board. This gives the team a unique blend of world-class experience and bright new talent spanning both electrical and mechanical design.

Focussing primarily on electrical design, Tobias Okech has joined the team as a Senior Design Engineer. Having graduated from the University of Liverpool in 2008 with a BSc in Physics, Tobias previously spent several years working in the analytical instrumentation industry on projects for clients including government agencies such as NASA and the United States Geological Survey.

Having already fulfilled his apprenticeship with MPE, Ben Meadley has come onto the Engineering team as a Junior Design Engineer. Then another of MPE's apprentices, Gillam Prescott, was recruited earlier this year to fill the newly created position of Engineering Coordinator.

Gillam's role involves him working closely with MPE's Manufacturing Department to ensure that designs are validated, electrically based production requirements are met, and all technical documentation is updated and correct. Together, Ben and Gillam contribute ten years of first-hand practical manufacturing knowledge of MPE's solutions.

The expanded Engineering team has already completed several significant new projects. They include the design, test and certification of MPE's radical Mil-Std-188-125-1A HEMP filter designs as well as updates to MPE's European TEMPEST pluggable filters.

The new appointments further strengthen MPE's Design Department, in which a wealth of experience is provided by Dave Glazebrook, Tom Chau and John Hughes. This expanded team is now the strongest and best resourced that it has ever been, ensuring that MPE is ideally placed to continue the delivery of its innovative, world-leading filter solutions for many years into the future.