

Typical insertion loss in a 50Ω system, measured in accordance with CISPR 17, with or without load

**DESCRIPTION**

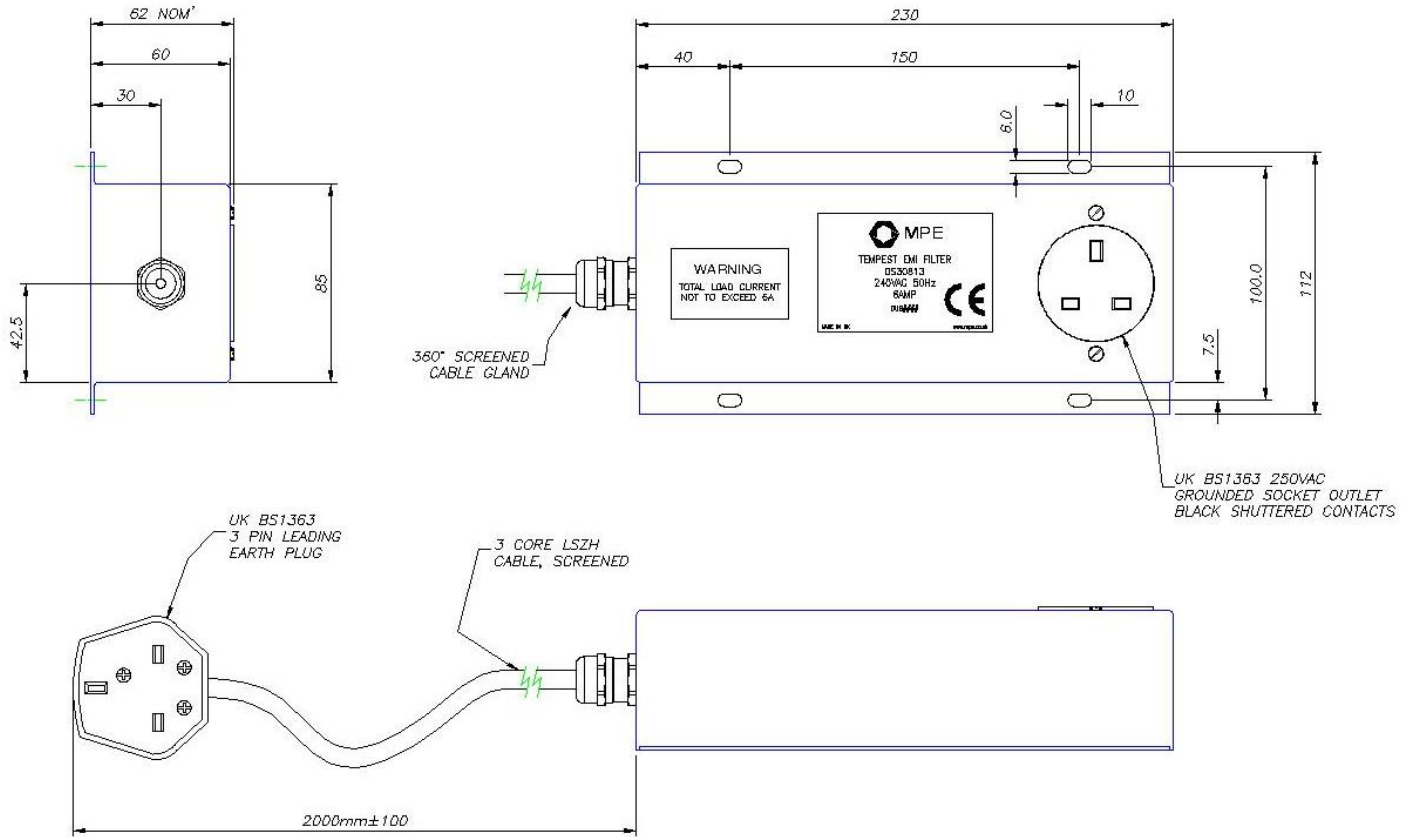
- TEMPEST EMI SP & N / 2 Phase Filter providing performance to SDIP-27 B/C
- Insertion loss of 60dB from 100kHz to 1GHz
- Designed for rapid deployment applications where hardwired connections are not practical
- Single UK Standard BS1363 3-pin output socket
- UK Standard BS1363 3-pin input plug with standard BS1362 7A replaceable fuse
- Designed to IT equipment safety standard EN 60950-1
- Fully 360° screened input cable to maintain red/black separation to filter
- Low Smoke Zero Halogen (LSZH) rated cabling for use in sensitive areas
- Self-healing metallised plastic film capacitor dielectric for fail-safe transient handling
- Rugged Stainless Steel enclosure
- Design of filter is downline tolerable to a personnel protection RCCB
- CE and RoHS Compliant

**RATINGS AND CHARACTERISTICS**

Part Number	DS30830
NATO Stock Number	5915-99-297-9931
Number of Lines	2 (Single Phase and Neutral or 2 Phase)
Rated Voltage	250Vac 50/60Hz
Test Voltage (line – earth)	2250Vdc
Test Voltage (line – line)	1250Vdc
Rated Current, I <sub>R</sub> at 50°C	6A
Maximum Earth Leakage Current	3.5mA
Maximum Temperature Rise on Full Load	25°C
Operating Temperature Range	-25°C to 50°C
Insertion Loss (50Ω, asymmetric)	60dB from 100kHz to 1GHz (see graph)
Discharge Time	Less than 1s to below 34V



**DIMENSIONS AND MECHANICAL DETAILS** (All dimensions in mm)



Enclosure	Ferromagnetic Stainless Steel
Capacitor Potting	Epoxy resin meeting UL94-V0
Output Termination	1 x BS1363 3-pin socket
Input Termination	BS1363 3-pin leading earth plug on 2m flexible screened LSZH cable
Earth Connection	Via input termination earth pin
Fusing	7A BS1362 fuse within input plug
Mounting	4 x $\phi$ 6mm holes
Weight (approx.)	2.0kg
Finish	Natural, brushed
Marking	Self-adhesive label (see outline drawing for details)

**INSTALLATION**

Although the filter does not need to be mounted to a solid surface, it is provided with a mounting option and were possible it should be fixed securely with maximum distance between the filter and the User's device. The Input screened cable and the User's Output cable should be maximally separated from each other to maintain red/black cable separation. Please see the MPE TEMPEST Pluggable Filters Installation and Maintenance Guide Application Note for further information.

**SAFETY**

Relevant safety standards have been adhered to in the design and manufacture of this product. The filter must be solidly and permanently earthed to allow safe discharge of all internal capacitors - The earth connection of the input plug must be present and must not be interfered with. The User should ensure they do not overload the filter over the 6A load limit.