

Typical Insertion Loss in 50Ω system with or without load

## DESCRIPTION

- TEMPEST EMI SP & N / 2 Phase Filter providing performance to SDIP-27 B/C
- Insertion loss of 60dB from 100kHz to 1GHz
- Twin UK Standard BS1363 3 pin output sockets
- UK Standard BS1363 3 pin input with standard BS1362 13A replaceable fuse
- Designed to IT equipment safety standard EN 60950-1
- Fully 360° screened input cable to maintain red/black separation to filter
- Low Smoke Zero Halogen (LSZH) rated cabling for use in sensitive areas
- Self-healing metallised plastic film capacitor dielectric for fail-safe transient handling
- Rugged Stainless Steel enclosure
- Design of filter is downline tolerable to a personnel protection RCCD
- CE Compliant

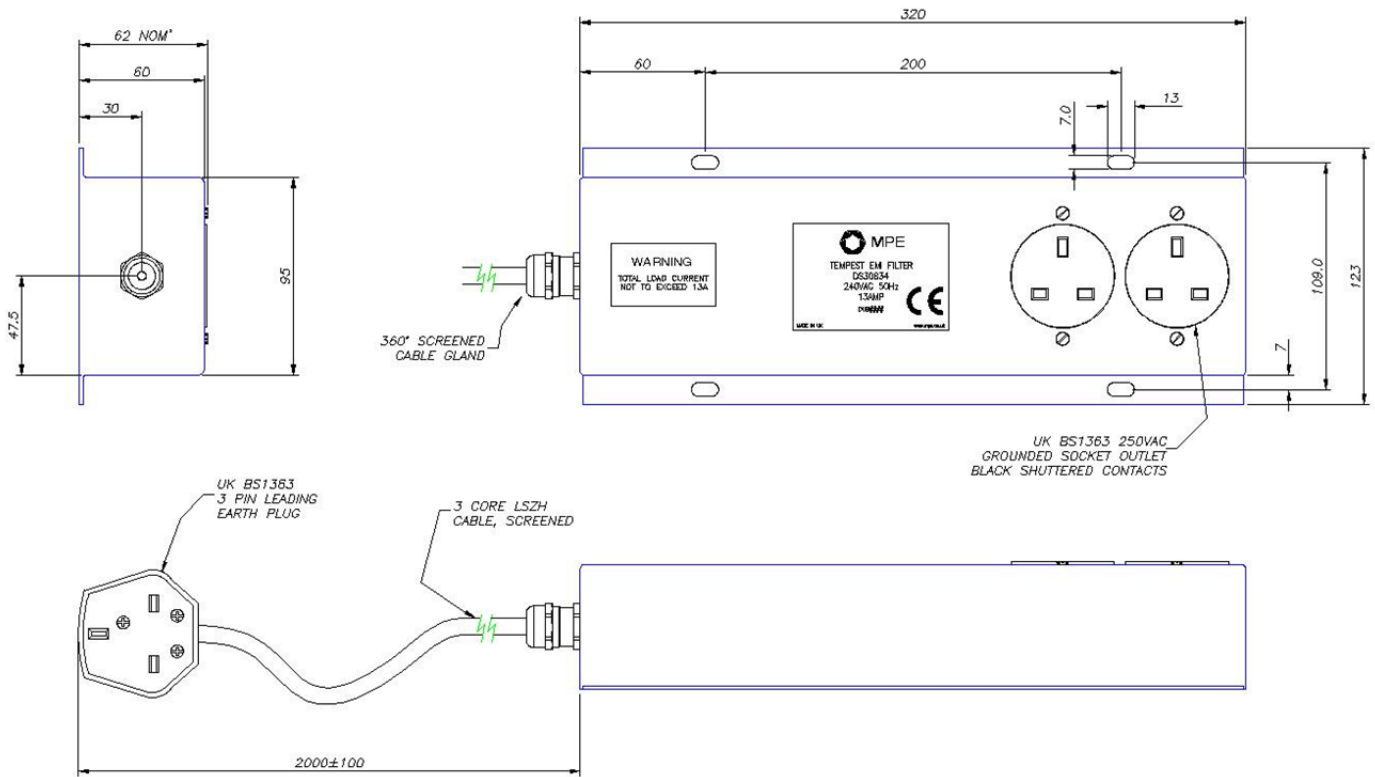
## RATINGS AND CHARACTERISTICS

Number of Lines	2 – Single Phase and Neutral or 2 Phase
Rated Voltage	250V ac 50/60Hz
Test Voltage (line – earth)	2250V dc
Test Voltage (line – line)	1250V dc
Rated Current, I <sub>R</sub> at 40°C	13A
Earth Leakage Current:	Less than 3.5mA
Maximum Temperature Rise on Full Load	25°C
Operating Temperature Range	-25°C to 50°C
Insertion Loss (50Ω, asymmetric)	60dB from 100 kHz to 1GHz (see graph)
Discharge Time	Less than 1s to below 34V



**DIMENSIONS AND MECHANICAL DETAILS**

All dimensions in mm.



- |                     |   |
|---------------------|---|
| Enclosure:          | Ferromagnetic Stainless Steel                                       |
| Capacitor Potting:  | Epoxy resin meeting UL94-V0   |
| Output Termination: | 2 x BS1363 3 pin socket   |
| Input Termination:  | BS1363 3 pin leading earth plug on 2m flexible screened LSZH cable. |
| Earth Connection:   | Via input termination earth pin.                                    |
| Fusing:             | 13A BS1362 within input plug.                                       |
| Mounting:           | 4x 6mm holes  |
| Weight:             | <3.3kg  |
| Finish:             | Natural, brushed.   |
| Marking:            | Black epoxy based ink or label. See outline for details.            |

**INSTALLATION & MAINTENANCE DETAILS**

This filter is designed for high insertion loss filtering in TEMPEST applications where hardwired connections are not practical. Please see The TEMPEST Pluggable Filters Installation and Maintenance Guide Application Note for further information.

**SAFETY**

Filters must be solidly and permanently earthed to allow safe discharge of all internal capacitors – the earth connection of the input plug must be present and must not be interfered with.