

LIGHTNING PROTECTION UNITS



www.mpe.co.uk

LEMP/NEMP protection units designed for application within zoned electrical distribution systems fully protected against the effects of transients. Units will contribute to protection of susceptible equipments from external natural and artificial EMP threats.

The product is a two-chamber single cabinet integrating high speed high energy lightning overvoltage surge arrestors with screw terminal connections to accept the field wiring electrical cable distribution system. The unit will tolerate multiple events and is self restoring post LEMP. The cabinet is rugged and corrosion resistant designed for chassis or bulkhead mounting.



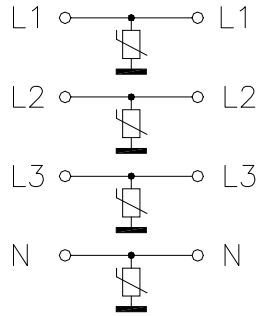
GENERAL TECHNICAL SPECIFICATION

Rated voltage	250VAC 50/60Hz line to earth
Rated current	100Amp
Operating temperature range	-45°C to +85 °C
Storage temperature	-55°C to +100 °C
Current overload rating	10x rated current for 1 second 1.5x rated current for 15 minutes
Voltage overload rating	1.1x rated voltage continuously

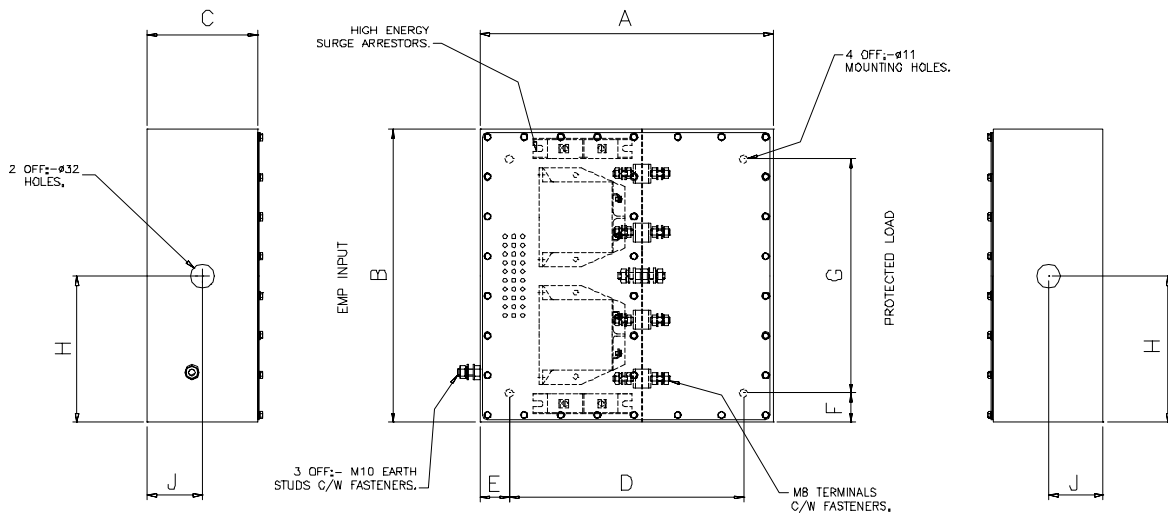
RATINGS

Product Part Number	Number Lines	Primary Surge Arrestor Ratings			Equipment Protection		
		Operating Voltage	Peak Surge 8/20µs Current	Maximum 2ms Energy Absorption	Surge Transmission	Impressed 8/20µs Current	
LP46000	2	320VAC		25kA	400J	850V	
LP46001	4			@200A			
LP46002	2			40kA	600J		@300A
LP46003	4			70kA	1000J		@500A
LP46004	2			100kA	1600J		@800A
LP46005	4						
LP46006	2						
LP46007	4						

CIRCUIT DIAGRAM 4-line filter detail



MECHANICAL SPECIFICATION



Filter	A	B	C	D	E	F	G	H	J
LP46000	300	200	100	220	40	40	120	100	50
LP46001	300	250	100	220	40	40	170	125	50
LP46002	300	200	100	220	40	40	120	100	50
LP46003	300	250	100	220	40	40	170	125	50
LP46004	400	200	150	320	40	40	120	100	75
LP46005	400	300	150	320	40	40	220	150	75
LP46006	400	200	150	320	40	40	120	100	75
LP46007	400	400	150	320	40	40	320	200	75

ORDERING INFORMATION

22/4600#

SAFETY

Filter must be solidly and permanently earthed in accordance with current safety regulations